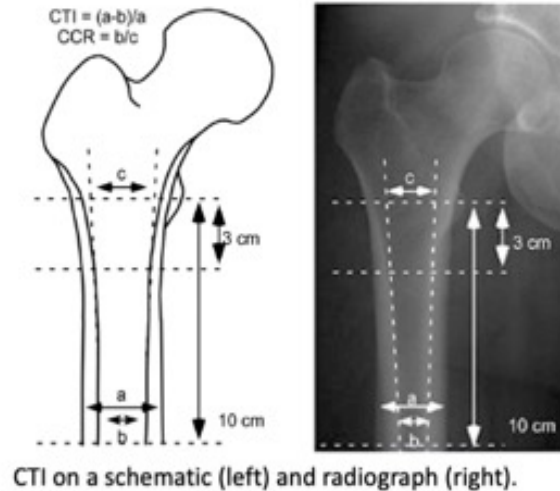


Radiographic Cortical Thickness Index Predicts Fragility Fracture in Gaucher Disease



- Retrospective study in 247 patients with Gaucher disease with a median follow-up of 11 years (range, 2–30 years) showed femoral cortical thinning (cortical thickness index [CTI] ≤ 0.50) predicted fragility fractures ($P = .01$) independent of age, sex, fracture status, splenectomy, and delayed enzyme replacement therapy.
- CTI was a stronger predictor of future fracture (AUC, 0.96) than dual-energy x-ray absorptiometry, performed at various sites (T-score at total hip [AUC, 0.78], femoral neck [AUC, 0.73], forearm [AUC, 0.78], and spine [AUC, 0.69]).

D'Amore S et al. Published Online: December 20, 2022
<https://doi.org/10.1148/radiol.212779>

Radiology